



School Level Examination
SLE 2023

GRADE
7

CYBER

Subject Code:

5	0	1
---	---	---

Total Questions: 40

Time: 1 hour

DO NOT OPEN THIS BOOKLET UNTIL INSTRUCTED TO DO SO

- All questions are compulsory.
- Read the instructions on the **ANSWER SHEET** and fill in your **NAME, CLASS** and **OTHER INFORMATION**.
- To mark your choice of answer by darkening the circles in the **ANSWER SHEET**, use a **BLUE/BLACK BALLPEN** only.
- You **MUST** record your answers on the **ANSWER SHEET** only.
- There are **40 MULTIPLE CHOICE QUESTIONS**. Use the information provided to choose the **BEST** possible answer among the four options. On your **ANSWER SHEET** fill in the circle that matches your answer.
- Marks are **NOT** deducted for incorrect answers.
- Return the **ANSWER SHEET** to the invigilator at the end of the examination.
- You are **NOT** allowed to use a calculator. You may use a ruler and spare paper for rough work.

CYBER

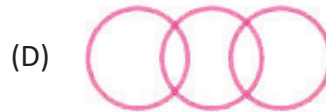
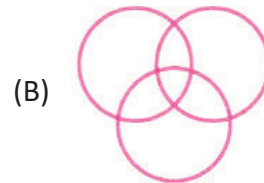
**This question paper contains a total of 40 questions divided into three sections - A, B and C.
Read the instructions carefully before attempting these questions.**

Section A (Logical Reasoning)

- If in a certain code, GRASP is written as 93645 and CANT as 2678, then how will CASPAR be written in the same code?

(A) 264563 (B) 264536
(C) 264356 (D) 264653
- Which would be the proper order of the following (in ascending order)?
1. Gigabyte 2. Bit 3. Kilobyte 4. Byte 5. Megabyte

(A) 1, 2, 4, 3, 5 (B) 1, 5, 3, 2, 4
(C) 4, 2, 3, 5, 1 (D) 2, 4, 3, 5, 1
- Which of the following diagrams indicates the best relation amongst the following?
Science, Physics, Chemistry



- If in a certain code, RAFTING is written as UXIQLKJ, then how will FLOATING be written in the same code?

(A) IIRWXDQF (B) IIXRWGQE
(C) IIRXWFQD (D) IIXRFWQD
- Complete the series:
28, 33, 31, 36, 34, ?

(A) 36 (B) 37
(C) 38 (D) 39
- Choose the word that is most nearly opposite in meaning to the given word.
SIMULATED

(A) Real (B) Contrived
(C) Unassuming (D) False

7. 'P' is the daughter of 'Q', 'R' is the sister of 'P', 'Q' is the daughter of 'S'. How is 'R' related to 'S'?
- (A) Granddaughter (B) Grandmother
(C) Daughter (D) Aunt

8. Complete the pattern.



- (A) (B)
(C) (D)

Section B (Subject Specific)

9. _____ is used for printing vector graphics.
- (A) Plotter (B) Scanner
(C) Mouse (D) None of these

10. Identify the icon used to hide layers.

(A) T



(C)

(B)



(D)



11. Which of the following cannot be used as an identifier name?
- (A) Keyword (B) Literal
(C) Token (D) All of these
12. What will be the output of the following code:
- ```
x = ['ORANGE']
for i in x:
 print(i.lower())
```
- (A) Orange (B) orange  
(C) ORANGE (D) None of these
13. Which of the following is the best example of AI in navigation?
- (A) Facebook (B) Amazon  
(C) Google Maps (D) Snapchat

14. What is Artificial Intelligence?
  - (A) Playing a game on computer
  - (B) Creating intelligent machines
  - (C) Programming on machine with your own intelligence
  - (D) Putting your intelligence in machine
15. All the received mails of our e-mail account are displayed in \_\_\_\_\_.
  - (A) Inbox
  - (B) Sent
  - (C) Drafts
  - (D) Trash
16. What is the method for achieving continuous playback of a photo album slide show?
  - (A) Loop continuously
  - (B) Use random slide transition
  - (C) Launch an online broadcast
  - (D) All of these
17. What is the appropriate syntax in HTML for generating a hyperlink on a webpage?
  - (A) <BODY LINK = "abc.html">
  - (B) <A LINK = "abc.html">
  - (C) <A HREF = "abc.html">
  - (D) <BODY SRC = "abc.html">
18. Which of the subsequent formulas is incorrectly entered in MS Excel?
  - (A) =B1 + C5
  - (B) 15 - 2
  - (C) =75 \* 29
  - (D) =A1 – B1
19. You can cause a page break in MS Word, \_\_\_\_\_.
  - (A) Through the use of the Insert/Section break button on the Insert tab
  - (B) By changing the size of the font in your text
  - (C) By moving the cursor to the right spot and hitting the F1 key.
  - (D) By putting your mouse where you want it and pressing Ctrl + Enter
20. Which of the following is a software program that replicates its own code over a computer system or network?
  - (A) Trojans
  - (B) Worms
  - (C) Antivirus
  - (D) Virus
21. The main cause of inaccurate results in computer calculations is primarily attributed to which of the following?
  - (A) The occurrence of power failure
  - (B) The data was entered incorrectly, resulting in inaccurate information
  - (C) There was a distraction that may have contributed to the error
  - (D) The computer circuitry

22. Which app is used to schedule our meetings and to set reminders?  
 (A) Google Contacts (B) Google Calendar  
 (C) Google Meet (D) Google Scholar
23. Among the available selection tools, which one functions in a manner similar to that of a pencil?  
 (A) Lasso Tool (B) Magnetic Lasso Tool  
 (C) Polygonal Lasso Tool (D) None of these
24. In Microsoft Excel, which feature is utilised to exhibit the rows that satisfy specific criteria?  
 (A) Sort (B) Find  
 (C) Format (D) Filter
25. Check whether the following statement about hacking is accurate by attentively reading it.  
 “In some circumstances, hacking a computer or network may be permissible.”  
 Case 1 - In no circumstance can hacking be lawful.  
 Case 2 - In some instances, it may be called as a legal obligation.  
 (A) Only case 1 is True (B) Only case 2 is True  
 (C) Both case 1 and case 2 are True (D) None of them is True

26. What will be the output of the following code?

```
s="welcome"
n = len(s)
for i in range(0, n):
 print(s[i], end = "#")
```

- (A) welcome (B) w#e#l#c#o#m#e#  
 (C) w#e#l#c#o#m#e# (D) None of these
27. \_\_\_\_\_ is the term for retrieving data from a cell located on a separate sheet in MS – Excel.  
 (A) Referencing (B) Featuring  
 (C) Updating (D) Implementing

28. Match the following:

| Column A  | Column B                            |
|-----------|-------------------------------------|
| (i) int   | (a) conditional statement in Python |
| (ii) if   | (b) logical operator in Python      |
| (iii) for | (c) datatype in Python              |
| (iv) and  | (d) loop in Python                  |

- (A) (i) – (d), (ii) – (b), (iii) – (a), (iv) – (c) (B) (i) – (d), (ii) – (c), (iii) – (a), (iv) – (b)  
 (C) (i) – (c), (ii) – (a), (iii) – (d), (iv) – (b) (D) (i) – (b), (ii) – (d), (iii) – (a), (iv) – (c)

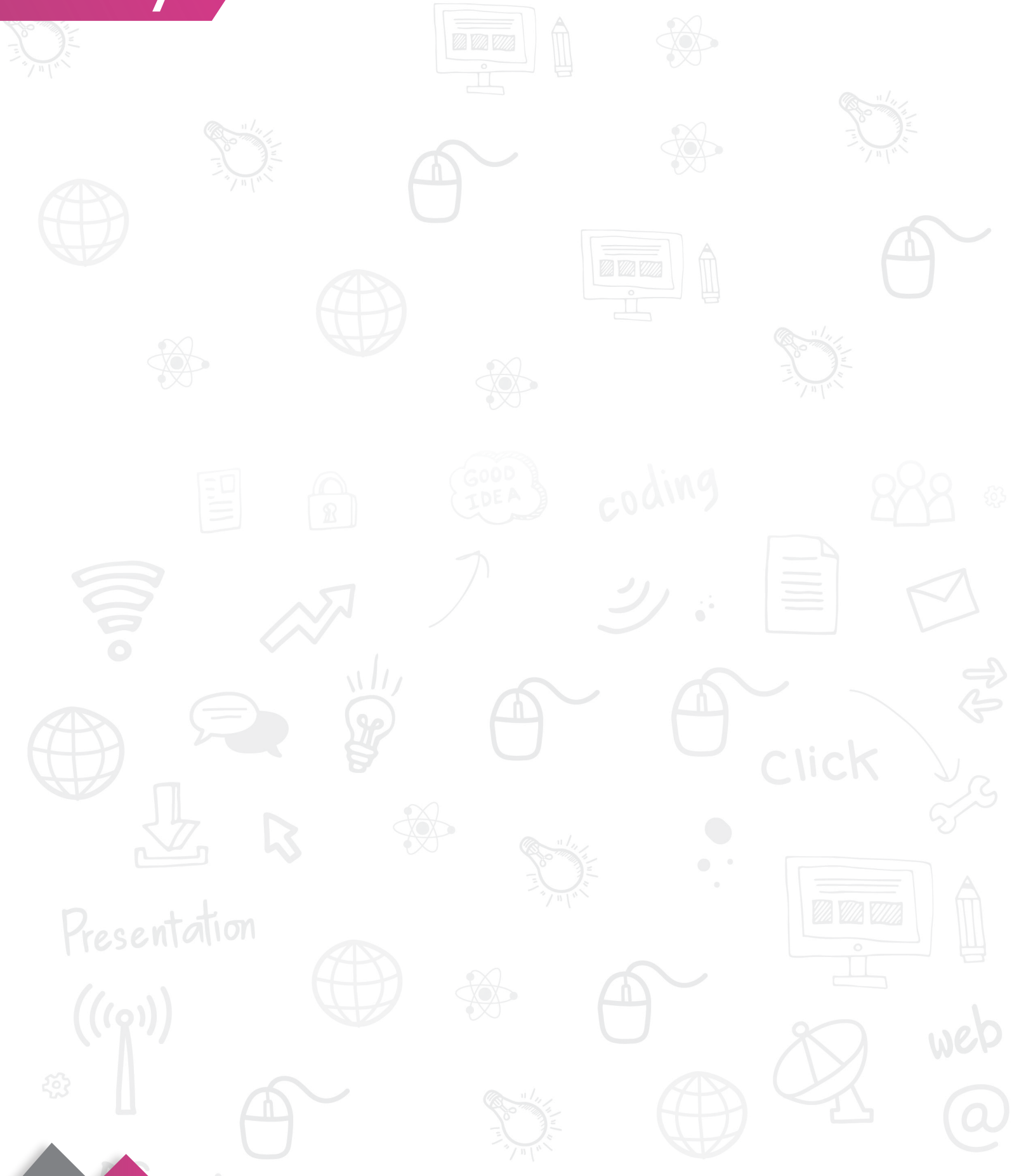
**Instruction: Q. 29 to 33 are two-key based questions having four options A, B, C and D out of which TWO are correct.**

29. Which of the following are word processing software?  
 (A) PowerPoint (B) Wordpad  
 (C) Word (D) EXCEL
30. Consider the conversation between 3 friends. Identify the true statements.  
 Jai: Slide is an electronic page in a presentation.  
 Hardik: Contents of master slide displays on each of the slide during presentation.  
 Niti: PowerPoint does not allow the user to edit text and graphics in a slide.  
 (A) Jai is correct (B) Hardik is incorrect  
 (C) Niti is incorrect (D) All are correct
31. Under File tab you can \_\_\_\_\_ and \_\_\_\_\_ your file.  
 (A) Print (B) Share  
 (C) Delete (D) Tag
32. Choose the two ways of calculating sum of a range of data.  
 (A) =SUM (range) (B) =COUNT(Range)  
 (C) = COUNT(range) (D) using  $\Sigma$  (Autosum)
33. \_\_\_\_\_ and \_\_\_\_\_ are the two types of tags in HTML.  
 (A) Content (B) Entry  
 (C) Container (D) Empty

### Section C (Competency Enhancement)

34. Nisha is studying about CPU. She learns that CPU has a speed with which it executes processes. Help Nisha identify the unit used to measure the speed of the CPU (processor)?  
 (A) Processing speed (B) Byte  
 (C) Coprocessor (D) Clock speed
35. Naveen wants to display his name on the screen. Which data type of Python can help him do this?  
 (A) String (B) Array  
 (C) List (D) All of these
36. Aditi added <B> tag to her HTML code. However, she does not know the effect of this tag. Identify the effect of this tag for her.  
 (A) It changes the font size. (B) It is used to add space.  
 (C) It applies bold style to the text. (D) It is used to add a table to HTML document.

37. Sanjay is studying about computer memory. He came across the term registers. Help Sanjay by selecting the CORRECT statement about registers.
- (A) Registers store data needed for a long time period.
  - (B) Registers contain instructions about saving files.
  - (C) Registers are same as Random Access Memory.
  - (D) Registers are used to store data and instructions that are needed instantly and frequently.
38. Vinay wants to give password to his Excel file. Which option in the Save As dialog box that provides the facility to create the password should he choose?
- (A) File → Info → Protect Workbook
  - (B) File → Save as → Protect Workbook
  - (C) Insert → Password
  - (D) Insert → Textbox
39. Meena is writing code in Python. Help her find the output of the given code:
- ```
str2 = "Hello"
str2 = "Bye"
print(str2)
```
- (A) Hello
 - (B) Bye
 - (C) Hello Bye
 - (D) All of these
40. Hardik wants to add a row to a table in his HTML document. Choose the correct tag for him.
- (A) <tr>
 - (B) <tt>
 - (C) <td>
 - (D) <tc>



Presentation

Click

web