



School Level Examination
SLE 2022

GRADE
8

CYBER

Subject Code:

5	0	1
---	---	---

Total Questions: 40

Time: 1 hour

DO NOT OPEN THIS BOOKLET UNTIL INSTRUCTED TO DO SO

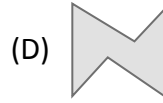
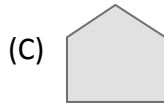
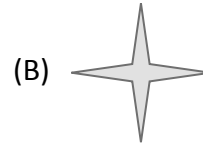
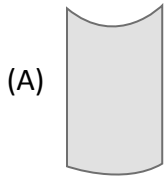
- All questions are compulsory.
- Read the instructions on the **ANSWER SHEET** and fill in your **NAME, CLASS** and **OTHER INFORMATION**.
- To mark your choice of answer by darkening the circles in the **ANSWER SHEET**, use a **Blue/Black Ball Pen** only.
- You **MUST** record your answers on the **ANSWER SHEET** only.
- There are **40 MULTIPLE CHOICE QUESTIONS**.
Use the information provided to choose the **BEST** answer among the four possible options.
On your **ANSWER SHEET** fill in the circle that matches your answer.
- Marks are **NOT** deducted for incorrect answers.
- Return the **ANSWER SHEET** to the invigilator at the end of the examination.
- You are **NOT** allowed to use a calculator.
You may use a ruler and spare paper for rough work.

CYBER

Section A (Logical Reasoning)

(This section contains 8 multiple choice questions. Each question has four choices (A), (B), (C) and (D), out of which only ONE is correct.)

1. Find the convex polygon from the following figures.



2. In the following groups, find the two words, one from each group, that together make a new, meaningful word. The word from the first group always come first.

P	Q	R
ARM	ARROW	ART

(i)	(ii)	(iii)
HEAD	NECK	BONE

(A) Q(ii)

(B) P(iii)

(C) Q(i)

(D) R(ii)

3. The additive inverse of $\frac{-7}{19}$ is _____ .

(A) $\frac{-7}{19}$

(B) $\frac{7}{19}$

(C) $\frac{19}{7}$

(D) $\frac{-19}{7}$

4. Which of the following alternatives completes the series correctly?

3	5	7
25 2	49 2	? 2

(A) 36

(B) 81

(C) 63

(D) 98

5. Out of the given words, which word will appear fourth in the dictionary?

(A) Solitude

(B) Solitaire

(C) Solitary

(D) Soliloquy

6. Choose the odd one out.

(A) Phycology : Algae

(B) Ornithology : Birds

(C) Mycology : Fungi

(D) Biology : Botany

7. Reema and Neha start from a fixed point. Reema moves 4 km to the South, then turns left and moves 3 km. Neha moves 3 km towards West, then turns right and moves 4 km further. How far apart are they now?
 (A) 7 km (B) 13 km
 (C) 10 km (D) 14 km
8. If $A = 6$, $O = 18$, $R = 27$ and $Q = 3$, then $\frac{R \times A}{Q} = ?$
 (A) $O \times Q$ (B) R
 (C) $\frac{R}{Q}$ (D) $A \times Q$

Section B (Subject Specific)

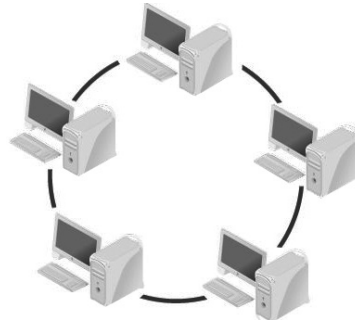
(This section contains 25 multiple choice questions. Each question has four choices (A), (B), (C) and (D), out of which only ONE is correct.)

9. Which of the following alternatives best defines the term 'computer hacking'?
- (A) It refers to people who work on computer software.
 (B) It refers to the practice of developing and altering software to accomplish the job the customer wants.
 (C) It refers to the practice of modifying or altering computer software and hardware to accomplish a goal that is considered to be outside the creator's original objective.
 (D) It refers to the changing of computer hardware as per the creator's original objective.
10. Given below are the various values of TARGET attribute in HTML. Match them with their descriptions.

Column I	Column II
(i) _blank	(p) opens the linked document in the full body of the window
(ii) _self	(q) opens the linked document in a named targetframe
(iii) _parent	(r) opens the linked document in the same frame
(iv) _top	(s) opens the linked document in the parent frame
(v) targetframe	(t) opens the linked document in a new window or tab

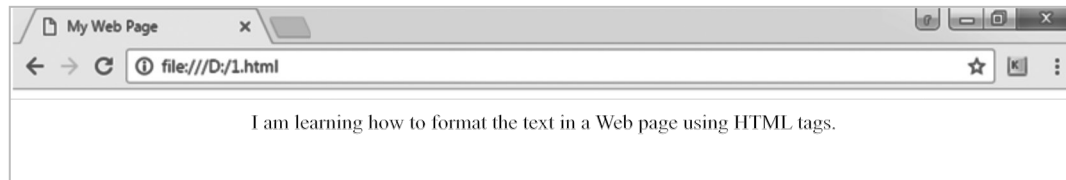
- (A) (i) → (p), (ii) → (q), (iii) → (r), (iv) → (s), (v) → (t)
 (B) (i) → (t), (ii) → (s), (iii) → (r), (iv) → (q), (v) → (p)
 (C) (i) → (t), (ii) → (r), (iii) → (s), (iv) → (p), (v) → (q)
 (D) (i) → (r), (ii) → (t), (iii) → (p), (iv) → (q), (v) → (s)
11. What does the acronym FDDI stand for?
 (A) Fiber Distributed Data Interface (B) Fiber Data Distributed Interface
 (C) Fiber Dual Distributed Interface (D) Fiber Distributed Digital Interface

12. What type of network is illustrated in the following image?




- (A) CAN (B) LAN
(C) WAN (D) MAN
13. A formula begins with a _____ sign.
(A) @ (B) &
(C) # (D) =
14. Which of these is available in the *View* option in the *Views* group in the *Home* tab?
(A) Design View (B) Datasheet view
(C) Both (A) and (B) (D) None of these
15. Name the alternative which is NOT present in the *Slides* group.
(A) *New Slide* (B) *Layout*
(C) *Refresh* (D) *Section*
16. Which of the given statements about cybercrimes is INCORRECT?
(A) Cyber criminals take advantage of the anonymity, secrecy, and interconnectedness provided by the Internet, and therefore attack the very foundations of our modern information society.
(B) Cybercrime can involve cyber bullying, cyber stalking, cyber terrorism, denial of service attacks, hacktivism, and identity theft.
(C) Law enforcement officials have been able to keep pace with cyber criminals, who cost the global economy thousands annually.
(D) The police are attempting to use the same tools as cyber criminals use to perpetrate crimes, in an effort to prevent those crimes and bring the guilty parties to justice.
17. Each specific piece of information in a table is called a/an _____.
(A) number (B) alphabet
(C) record (D) field
18. Which tag is used to add a scrolling piece of text displayed either horizontally or vertically in a webpage?
(A) Font (B) Marquee
(C) Legend (D) Acronym

19. Name the tag that has been used to align the text in the given screenshot.



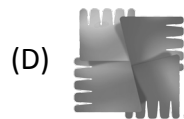
- (A) (B) <body>
(C) <center> (D) <h1>
20. Which of the following is the full form of NLP?
(A) Natural Language Processing (B) Near Letter Product
(C) Next Letter Principal (D) Never Left Product
21. _____ is not an area of application of AI.
(A) Expert system (B) Natural Language Processing
(C) 3D Printing (D) Robotics
22. What do you call a collection of character and paragraph formatting commands?
(A) Theme (B) Template
(C) Style (D) Boilerplate
23. _____ created in 2013 is an example of wearable AR interface.
(A) SixthSense (B) Google Glass
(C) Oculus Rift (D) Mimo
24. Which app uses the GPS location of the smartphone and the camera to collect information about the user's surroundings?
(A) Star Walk (B) Mimo
(C) Compass (D) Layar
25. The benefits of _____ can be divided into two generic categories: connectivity and sharing.
(A) networking (B) computing
(C) repairing (D) sports
26. MS Word inserts marks that show where deletions, insertions, and formatting changes are made, when _____ are turned on.
(A) *track changes* (B) *review*
(C) *comments* (D) *proofing*
27. To sum cells based on many criteria, you will use the function _____ in MS Excel.
(A) SUM (B) SUMS
(C) SUMIF (D) SUMIFS

28. Name the app that helps teachers and students to create surveys, forms and quizzes.
- (A) Google Forms (B) Google Drive
(C) Google Translate (D) Google Maps
29. Which of the following statements is correct in respect of the while loop?
- (A) Repeat a chunk of code a given number of times.
(B) Repeat a chunk of code until a condition is true.
(C) Repeat a chunk of code until a condition is false.
(D) Repeat a chunk of code indefinitely.
30. Who coined the term “Mechatronics”?
- (A) Ashai Haru (B) Jet Li
(C) Hideo Kojima (D) Tetsuro Mori
31. How are the instructions executed in the latest generation computers?
- (A) Parallel only (B) Sequentially only
(C) Both sequentially and parallel (D) All of these
32. Name the device which is used to carry digital data on analogue lines.
- (A) Demodulator (B) Modulator
(C) Modem (D) Multiplexer
33. Name the icon given below.
- 
- (A) Grid View (B) List View
(C) Detailed View (D) None of these

Section C (Competency Based)

(This section contains 7 multiple choice questions. Each question has four choices (A), (B), (C) and (D), out of which TWO are correct.)

34. Just by looking at the following symbols, identify the anti-virus software.



35. Which of the following are examples of a P2P network?
 (A) Facebook (B) Torrent
 (C) Napster (D) Smule
36. In the Wumpus World Problem, the reason for the uncertainty is that the agent's sensor gives only _____ and _____ information.
 (A) partial (B) complete
 (C) global (D) local
37. What are the main functions of problem-solving agent?
 (A) Solve the given problem and reach the goal
 (B) Find out which sequence of action will get it to the state of goal
 (C) Create a problem to solve and reach the goal
 (D) None of the above
38. Computer security software should be _____ regularly or _____.
 (A) updated (B) automatically
 (C) removed (D) installed again
39. To view the live preview of the theme you would _____ on the _____.
 (A) hover (B) left Click
 (C) desired theme (D) available template
40. Name the wireless networking standard technologies that are useful for creating small personal area networks.
 (A) GPRS technology (B) Bluetooth technology
 (C) NFC technology (D) Infrared technology

